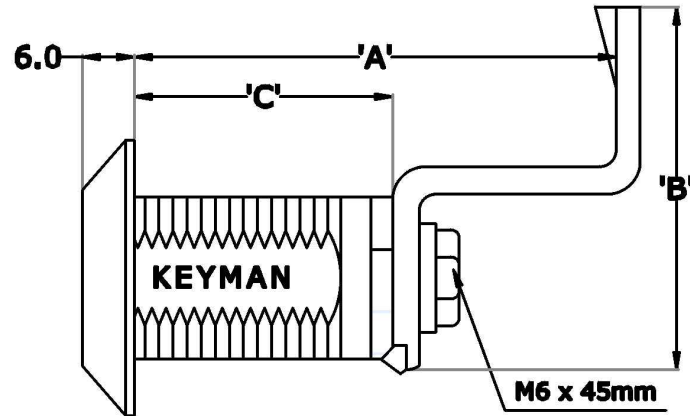
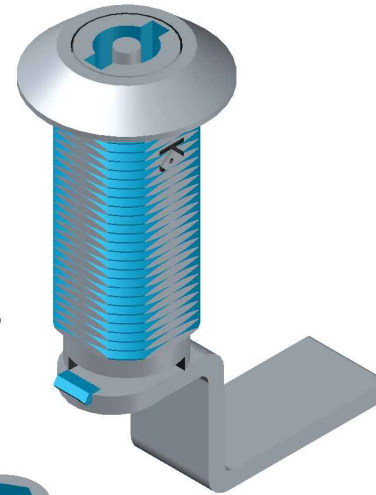
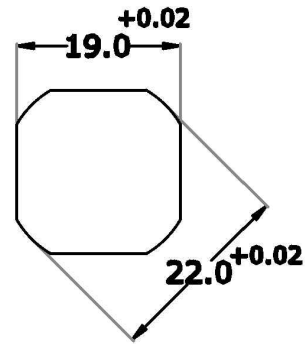


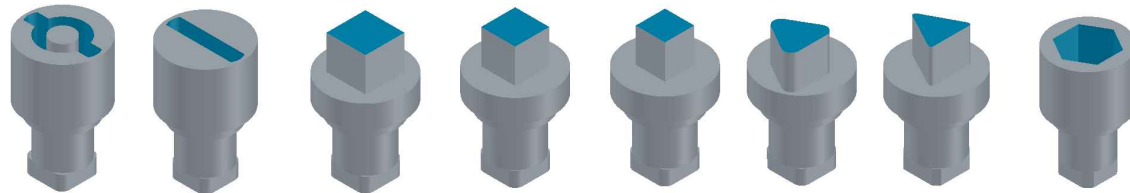
ALL DIMENSIONS IN MM



CUT-OUT



INSERTS:



BTI **SDI** **8MM I** **7MM I** **6MM I** **T I** **T I (2)** **HEX 10**
(Bit Type) (Screw Driver) (8mm square) (7mm square) (6mm square) (Triangle) (Triangle 2) (Hexagon 10mm)

MODEL NO.	DESCRIPTION
KP 01.27	BODY CHROME / INSERT CHROME
KP 01.28	BODY POWDER COATED / INSERT CHROME
KP 01.29	BODY POWDER COATED / INSERT POWDER COATED

(WASHER THICKNESS.) : 3.0mm.

(D) : WIDTH OF THE LEVER.

APPLICATION DRAWING FOR
MODEL NO. KP 1.27 - KP 1.29
(PANEL LOCK 50mm)

KPLLNO	(A)	(B)	(C)	(D)
1	46	42	50	18
2	50	40	50	16
3	50	54	50	19
4	50	56	50	18
5	50	62	50	18
6	50	70	50	18
7	50	75	50	18
8	50	83	50	16
9	52	54	50	19
10	52	62	50	18
11	57	53	50	18
12	57	60	50	18
13	59	58	50	18
14	62	55	50	18
15	64	52	50	18
16	68	50	50	18
17	71	53	50	18
18	73	56	50	18
19	73	50	50	18
20	76	54	50	18
21	76	50	50	16
22	79	54	50	18
23	86	55	50	16
24	64	46	50	18